

## Narrative Summary (Histology)

---

### Answers

#### **A) Summarize the experimental design and method of patient recruitment (according to the authors)**

According to Wakefield (1998), the recruitment method for the patients included several experimental procedures in order to be sure of the diseases and according responses. Based on the facts, there were 12 children with referral admission requests, in which, 11 were boys and only one was a girl. The examinations that were conveyed upon the patients were, behavioral symptoms, internal body problems and mental difficulties. Three major investigations were done before recruitment of the patients, which included clinical investigations, laboratory experiments and histology.

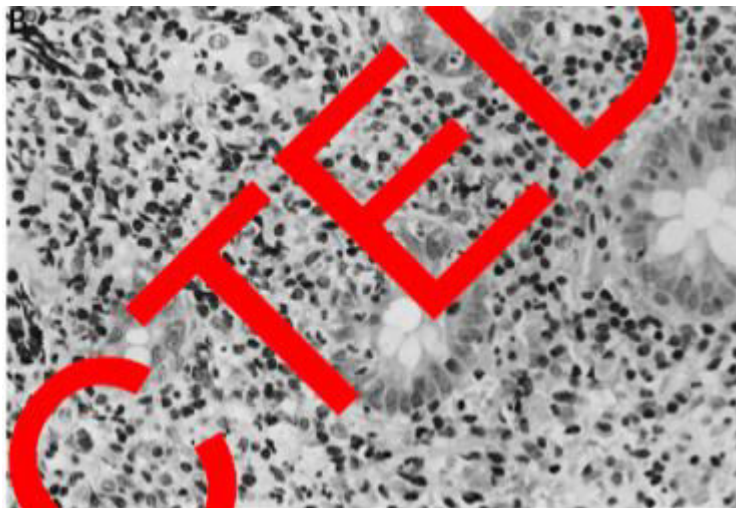
Firstly, the historical details of immunizations of the patients were gathered and all the enclosure to infectious diseases was examined. Neuropsychiatric assessments were done for seven children in order to assess the behavioral dilemmas. Additionally, the patients were examined through sedation and the experiment done, mainly involved *ileocolonoscopy* and the sedation was done using SHM or MAT. Again, under sedation, cerebral magnetic resonance imaging (MRI) and electroencephalography (EEG) for visual, brain stem auditory and sensory evoked potentials were done.

**B) Explanation of figure 3**

The figure 3 refers to the biopsy samples gathered from the children.



This part of the figure explains the biopsy sample from terminal ileum.



This part of the image explains biopsy sample from the colon

Both of the imagery suggests extensive lymphoid hyperplasia and confluent lymphoid hyperplasia in the child number three. Again, based on the secondary images, the child three under section B referred as the holder of dense infiltration of the lamina propria crypt epithelium by neutrophils and mononuclear cells.

The samples are stained with haematoxylin and eosin.

### C) What is increased intestinal permeability and how is it explained (histological)?

Human intestinal systems include epithelial barriers. While the epithelial barriers stop functioning, the dilemma is called intestinal permeability. The increased permeability is the reason where, microbial products such as bacteria and infections are translocated within the body parts. The translocation of bacteria or microbial products causes inflammatory changes in target organs. There is one hypothesis called '*leaky gut*', which refers to a pathopsychological explanation for all the diseases.

There are several major diseases, that might occur while increased intestinal permeability, which are,

- ✓ Inflammatory Bowel disease (IBD)
- ✓ Irritable Bowel Syndrome (IBS)
- ✓ Primary Biliary Cholangitis (PBC)
- ✓ Type 1 and type 2 diabetes
- ✓ Chronic kidney diseases
- ✓ And Chronic heart failure (CHF)

Although, there is no such cause and effect relationship, majority of the clinical and experimental data suggests the fundamental significance of IIP lies in inflammatory changes in organs. This might lead to organ failure within the body and affect the carrier as a whole.

### D) What were the major conclusions drawn from this study?

The major conclusions that can be drawn from the study are the advantages of the desperation for the nations with an urge to seek supplies. The UK general medical council has developed insights regarding the truthfulness of Wakefield's statements. It was proved via judgmental values and dataset that majority of the elements provided by Wakefield *et al.*, was incorrect and included false information within the articles published. The information provided by Wakefield was dissimilar to the facts and was published based on previous findings from earlier investigations on the similar topic. The major informatics included that the children, who were the subjects of the study, were consecutively referred, which was proven as a false statement and in case of other information as in the investigation were approved by the

## The Essay Assignment Help

medical council was another false statement provided by Wakefield. Hence, it can be concluded that the published paper must be entirely retracted from the records.

### **E) Does the measles infection / Chrones disease link “hold water?” Cite a reference either supporting or detracting from this point?**

Measles infection or Chrones disease is one type of virus that spreads from one person to another. The fundamental medium for spreading of this disease is water droplets. Water is everywhere in this earth and majority of the viruses are spread via coughs and sneezes of people ("Access NCBI through the World Wide Web (WWW)", 1995). Hence, the link between measles infection and hold water is much stronger than normal careers of virus infections. The measles disease is often spread through human connectivity with each other such as kissing, intercourse etc. The fundamental symptoms of this disease are, bad cold, red eyes and a continuous temperature rise. Moreover, there might be some grey white spots in all over mouth and throat, while the disease tends to spread the spots disappear.

### **F) After reading the series of retractions published in the Lancet summarize what happened.**

Based on the retractions published in the Lancet, it can be summarized that all the documents published in the documents are vague. It was represented in the articles that several posts determined were false to their statements. The significant summary, that can be drawn from the examination are the benefits of the distress for the countries with a desire to look for provisions. The UK general restorative committee has created bits of knowledge with respect to the honesty of Wakefield's announcements. It was demonstrated by means of judgmental qualities and dataset that larger part of the components given by Wakefield et al., was off base and included false data inside the articles distributed. The data given by Wakefield was not at all like the certainties and was distributed dependent on past discoveries from prior examinations on the comparative point. The significant informatics incorporated that the kids, who were the subjects of the examination, were successively alluded, which was refuted as an announcement and if there should be an occurrence of other data as in the examination were affirmed by the medicinal gathering was another

bogus articulation given by Wakefield. Subsequently, it very well may be inferred that the distributed paper must be altogether withdrawn from the records.

### **G) Why this study is in(famous)?**

The study tends to be in(famous) as it has presented vague publications based o false statements and neither was investigated through a valid source.

**References**

Access NCBI through the World Wide Web (WWW). (1995). *Molecular Biotechnology*, 3(1), 75-75. doi:  
10.1007/bf02821338